

ACT

Automotive Configuration Tool

INSTALLATION GUIDE

4.01.0248.20001 2.2 en-US ENGLISH

Important User Information

Disclaimer

The information in this document is for informational purposes only. Please inform HMS Industrial Networks of any inaccuracies or omissions found in this document. HMS Industrial Networks disclaims any responsibility or liability for any errors that may appear in this document.

HMS Industrial Networks reserves the right to modify its products in line with its policy of continuous product development. The information in this document shall therefore not be construed as a commitment on the part of HMS Industrial Networks and is subject to change without notice. HMS Industrial Networks makes no commitment to update or keep current the information in this document.

The data, examples and illustrations found in this document are included for illustrative purposes and are only intended to help improve understanding of the functionality and handling of the product. In view of the wide range of possible applications of the product, and because of the many variables and requirements associated with any particular implementation, HMS Industrial Networks cannot assume responsibility or liability for actual use based on the data, examples or illustrations included in this document nor for any damages incurred during installation of the product. Those responsible for the use of the product must acquire sufficient knowledge in order to ensure that the product is used correctly in their specific application and that the application meets all performance and safety requirements including any applicable laws, regulations, codes and standards. Further, HMS Industrial Networks will under no circumstances assume liability or responsibility for any problems that may arise as a result from the use of undocumented features or functional side effects found outside the documented scope of the product. The effects caused by any direct or indirect use of such aspects of the product are undefined and may include e.g. compatibility issues and stability issues.

Table of Contents

Page

1	Product Description	3
2	Installing the ACT Tool	4
3	Downloading a Configuration	4
4	Support/Return Hardware	7
	4.1 Support	7
	4.2 Return Hardware	7
5	Disposal and recycling.....	7

This page intentionally left blank

1 Product Description

FRC-EP-170, FRC-EP-190, and CANnector are Linux platforms that are able to work standalone without any connected PC. For the standalone function a configuration is needed, that can be created and downloaded to the device via the PC based *Automotive Configuration Tool (ACT)*.

The following licence stages are available:

- Freeware: no license dongle needed, all data logging, CAN/CAN FD/LIN/ Generic Ethernet/EtherCAT gateway, and user code functions are available
- Lite (1.12.0248.00000): all freeware functions are activated, additionally FlexRay/FDX gateway are enabled, and MATLAB/Simulink models are supported
- Standard (1.12.0248.00001): all functions are activated, for example creating residual bus simulations and configuring signal manipulation configurations is possible

Via the USB dongle a single ACT user license can be enabled.

For a detailed list of the functions of the different license stages and the different devices see www.ixxat.com/products/automotive-products.

2 Installing the ACT Tool

The ACT tool can be downloaded on www.ixxat.com/support.

- ▶ Plug in the USB dongle in the PC that is used for the configuration.
- ▶ On www.ixxat.com/technical-support/support select **Automotive Configuration Tool** and open **Secured Downloads**
- ▶ Download the ACT tool ZIP container from the support area.



To be able to download the ACT, a valid e-mail address must be submitted.

- ▶ Unpack the ZIP container in a user defined folder on the local drive.
- ▶ Execute the included installation file *Ixxat ACT Setup w.x.yyy.z CM.exe*.
→ ACT setup assistant is started.
- ▶ Follow instructions in ACT setup assistant.
- ▶ When ACT is installed, start ACT.
- ▶ For more information about the available functions of the license in use, select **Help** in the main menu to open the online help.

3 Downloading a Configuration

As a basic configuration of the ACT tool, a data logger that writes all messages of the CAN busses 1 to 4 (500 kBit/s) in ASCII format to the USB mass storage device, is provided.

- ▶ Power-up the device.
- ▶ Connect the device via USB to the PC.
- ▶ Start IxAdmin tool.
- ▶ In menu **File** select **Connect New Device**.
- ▶ Select the device type in use in the list and select **USB**.

- ▶ To establish the connection to the device, click button **OK**.

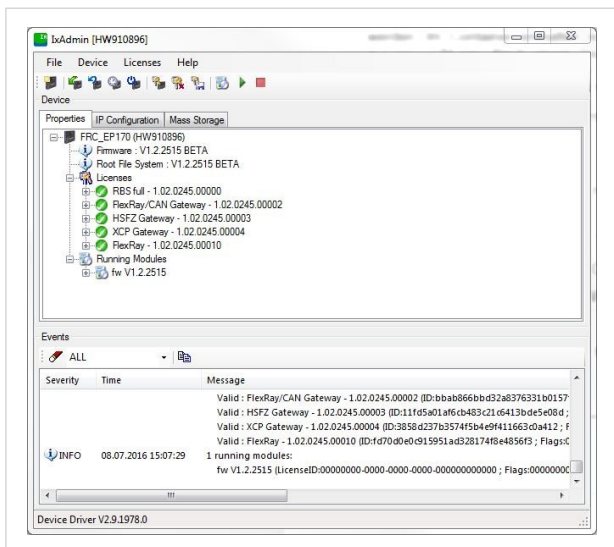


Fig. 1 IxAdmin Device Connect example

- ▶ In menu **Device** select **Add/Remove Application**.
- ▶ Open the device configuration *Basic_Logger.sdcfg* in directory *c:\Users\Public\Documents\Ixxat\ACT\Projects\BasicLogger\DeviceConfig*.

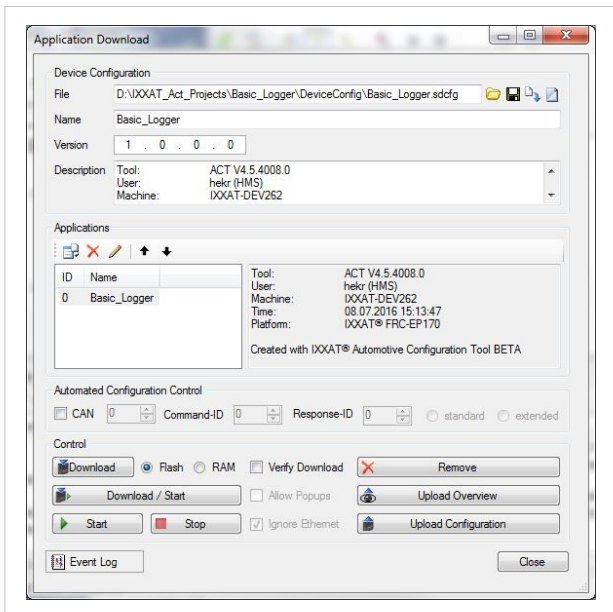


Fig. 2 IxAdmin Application Download example

- ▶ To load the application to the device, click button **Download/Start**.
→ Application is started.

For more information about the possibilities to change the CAN baudrate, to start and stop the logger and to upload the logged data refer to the IxAdmin online help.

4 Support/Return Hardware

4.1 Support

- ▶ For problems or support with the product request support at www.ixxat.com/support.
- ▶ If required use support phone contacts on www.ixxat.com.

4.2 Return Hardware

- ▶ Fill in the form for warranty claims and repair on www.ixxat.com/support/product-returns.
- ▶ Print out the Product Return Number (PRN resp. RMA).
- ▶ Pack product in a physically- and ESD-safe way, use original packaging if possible.
- ▶ Enclose PRN number.
- ▶ Observe further notes on www.ixxat.com.
- ▶ Return hardware.

5 Disposal and recycling



You must dispose of this product properly according to local laws and regulations. Because this product contains electronic components, it must be disposed of separately from household waste. When this product reaches its end of life, contact local authorities to learn about disposal and recycling options, or simply drop it off at your local HMS office or return it to HMS. For more information, see www.hms-networks.com.

© 2020 HMS Industrial Networks
Box 4126
300 04 Halmstad, Sweden

info@hms.se

4.01.0248.20001 2.2 en-US / 2020-06-25 / 19086