

Introduction

AC Cloud Control (ACCC) integrates seamlessly with Google Home, giving you control over your Intesis AC Cloud Control devices through voice commands. These voice commands can cover simple actions, such as turning ON or OFF the AC unit, or can also execute scenes, which are sequences of actions. The devices become part of your Google Home system, granting you many useful and different ways to interact with your home.

To start the linking process between ACCC and Google Home, you will need the following:

- An AC Cloud Control account with at least one registered device.
- A Google account.

You will also need a smartphone with the Google Home app (which you can download from the [Google Play Store](#) or the [iOS App Store](#)).

AC Units are controlled through a Google home-compatible device such as Google Nest Mini, Google Nest Audio, or a smartphone with the Google Home app.

Linking and Setup Process

Follow these steps to link AC Cloud Control with Google Home:

1. Log in to Google Home using your Google account.
2. Tap on the plus sign in the upper-left corner.

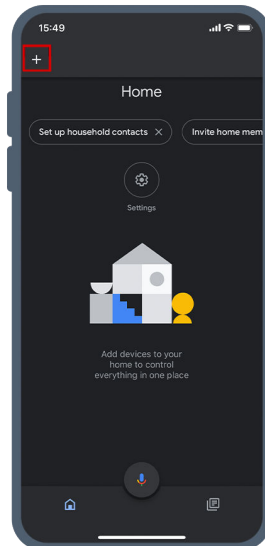


Figure 1. Google Home main screen

3. Select Set up device, and select Works with Google.

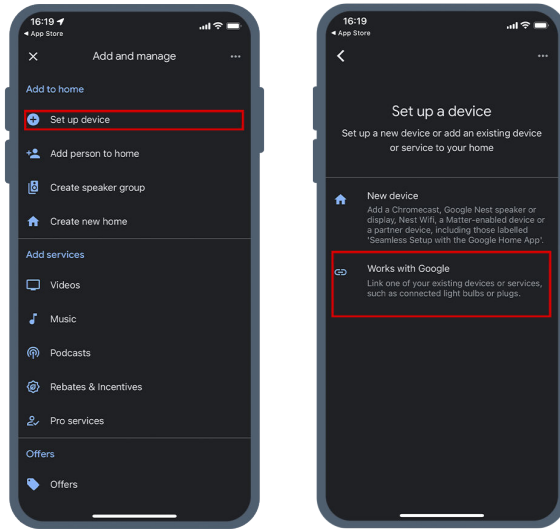


Figure 2. Set up a Google compatible device

4. Choose a home, and then search for the AC Cloud Control app.

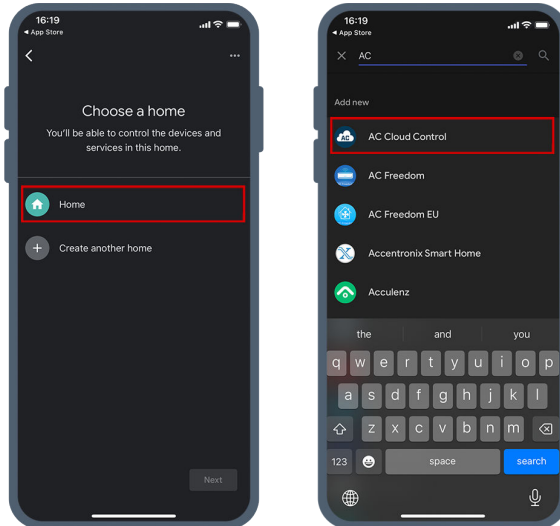


Figure 3. Home selection and ACCC app search

- The web interface of the Intesis AC Cloud Control will appear. Log in with your ACCC credentials to link your account with Google Home.

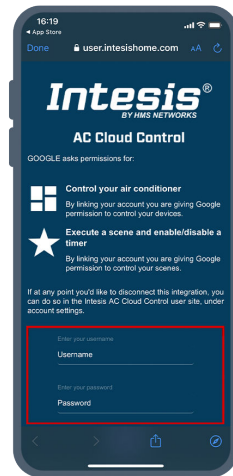


Figure 4. AC Cloud Control web interface

- Next, the available devices and services are listed. Select the ones you want to use with Google Home and tap the continue button. The general functions of the selected devices, such as turn ON or OFF, setpoint temperature, mode, etc. will be automatically accessible to Google Home. A confirmation message will appear once the AC Cloud Control has been linked correctly.



Figure 5. Device and scene selection. Linking completed

- All that is left is to assign your devices and scenes to any room you have created using the Google Home app.

Command and Scene Execution

To execute a single command or a scene with Google Home, you just need to activate Google Home and ask to activate the scene or command linked to the associated room.